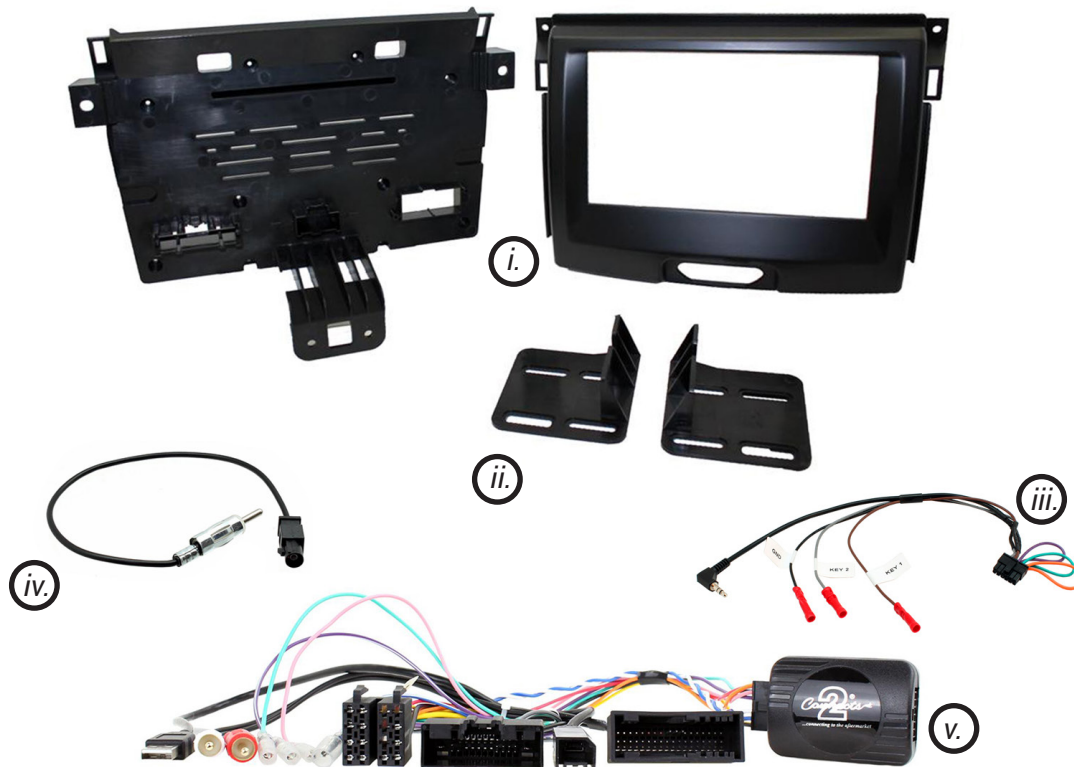




CTKFD65

Complete Installation Kit for Ford Vehicles



IN THE KIT

- | | | | |
|------|--------------------------------------|-----|---------------------------|
| i. | Double DIN Fascia Panel & Back Panel | iv. | Fakra-DIN Antenna Adapter |
| ii. | Brackets | v. | Vehicle Interface/Harness |
| iii. | Universal Patch Lead | | |

Designed and
Engineered
in the UK. 

APPLICATION

Note: Application data is subject to change at any time

Ford Everest	2015 - 2021
Ford Ranger	2015 - 2020

Please note: this kit is not compatible for vehicles with SYNC3 8" touchscreens as standard.

FEATURES

- Allows for the installation of a double DIN aftermarket stereo
- Includes mounting brackets and fitting accessories
- Retains factory steering wheel control & phone button functionality
- Retains USB & Aux inputs (if applicable)
- Provides outputs for speed pulse, reverse gear and park brake
- Includes additional accessories including antenna adapter and patchlead
- Fascia finished in black to match the vehicles dashboard

DISCLAIMER

The information provided in this document is subject to change without notice due to manufacturer changes and/or improvements to the product/s. This instruction manual is based on documented data and research. The manufacturer of this product cannot be held responsible for any changes made to the vehicle by the manufacturer or damages that may occur through the installation of this product in accordance with the steps outlined herein.

PRODUCT INFORMATION

The **CTKFD65** is a complete installation kit that provides a solution for select Ford vehicles when installing an aftermarket head unit. This kit contains a CAN steering wheel interface and harness which helps retain the steering wheel controls and factory phone button functionality of the vehicle (*if equipped*). The harness also allows for the retention of the original USB & Aux inputs of the vehicle. The lead features plug-and-play connectors for an easier installation process.

Also provided is a vehicle specific antenna adapter, and a universal patch lead, to ensure compatibility with almost any head unit on the market.

Please note: this kit is not compatible for vehicles with SYNC3 8" touchscreens as standard.

WIRING KEY

IN ISO CONNECTOR

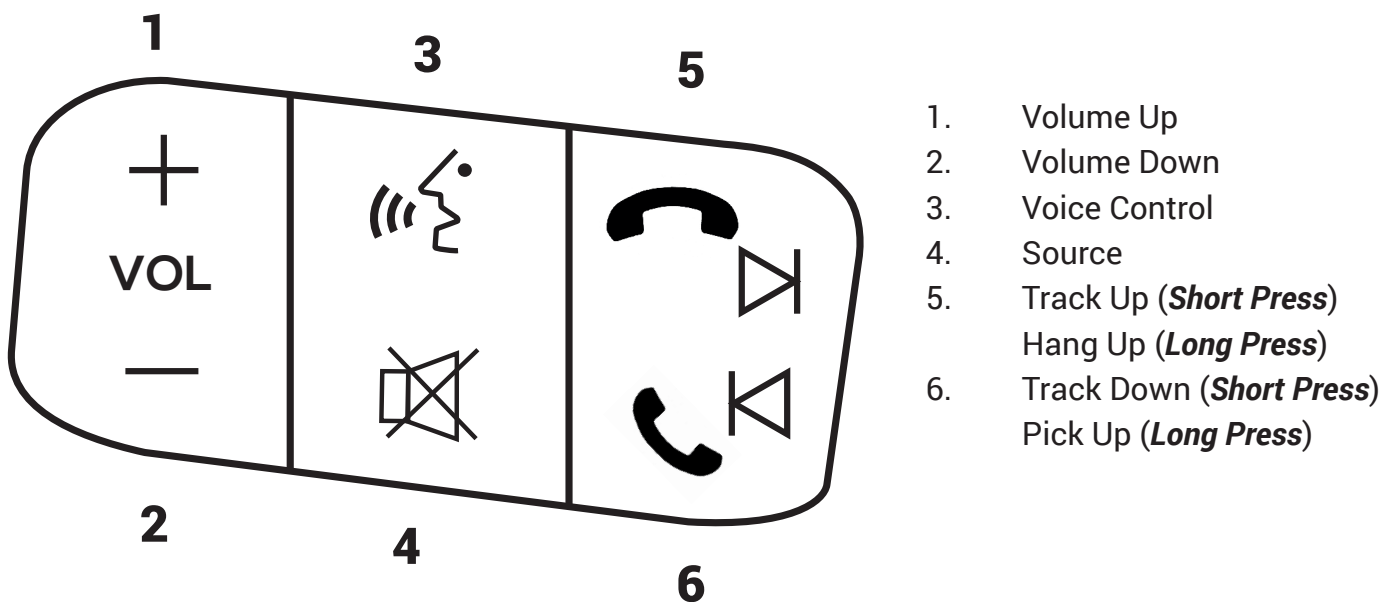
Purple	Right Rear Speaker +	Yellow	Permanent 12V
Purple/Black	Right Rear Speaker -	Black	Ground
Green	Left Rear Speaker +	Red	Ignition 12V
Green/Black	Left Rear Speaker -	Orange	Illumination
Grey	Right Front Speaker +		
Grey/Black	Right Front Speaker -		
White	Left Front Speaker +		
White/Black	Left Front Speaker -		

ADDITIONAL CONNECTIONS

Pink	Speed Pulse	Blue/White	Antenna Remote
Green	Park Brake	White/Red RCA	Aux Retention
Purple/White	Reverse Gear	USB-USB Plugs	USB Retention

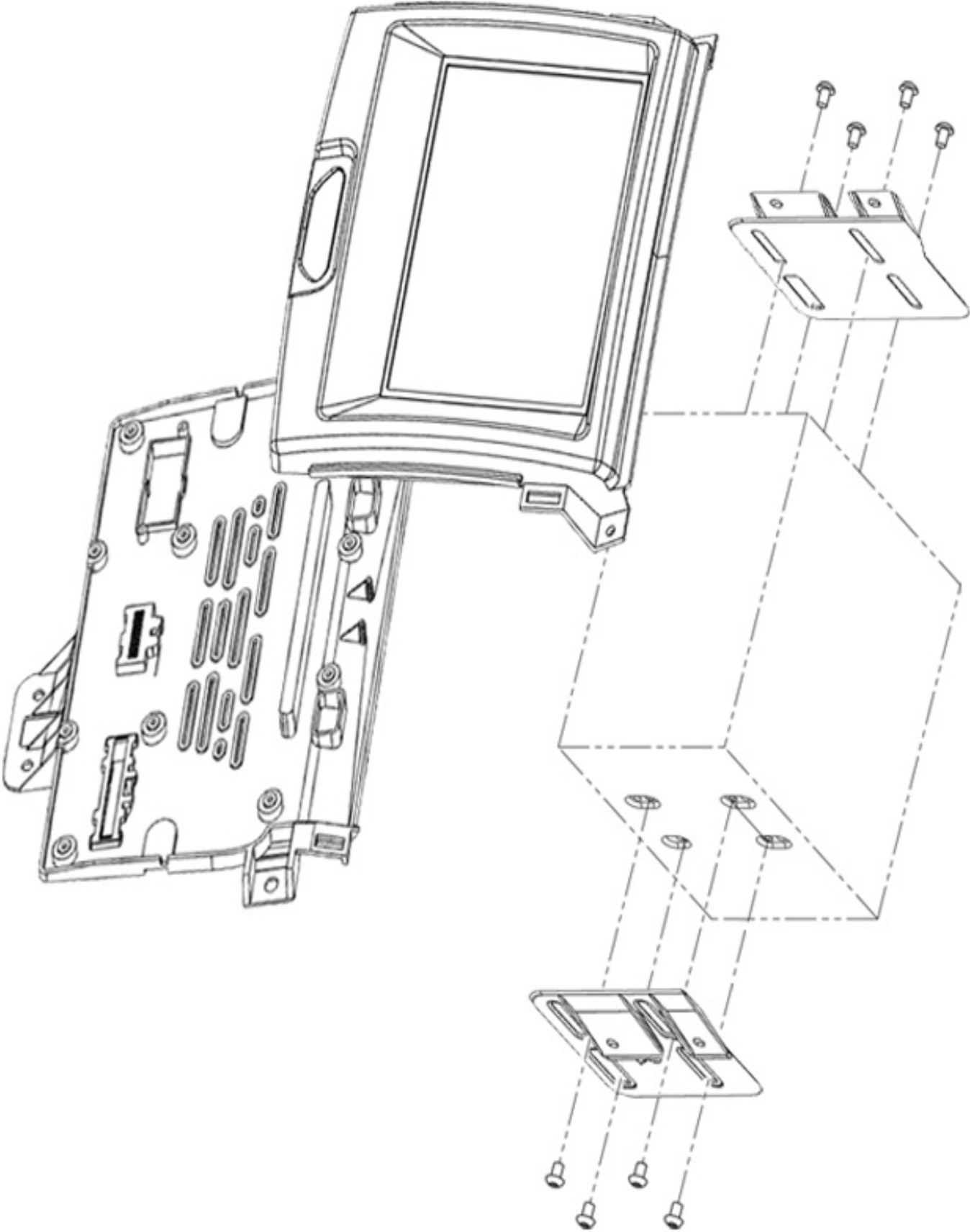
STEERING WHEEL CONTROL FUNCTIONALITY

The following diagram, though based on careful research, is an example only. Individual steering wheel control configurations may differ.



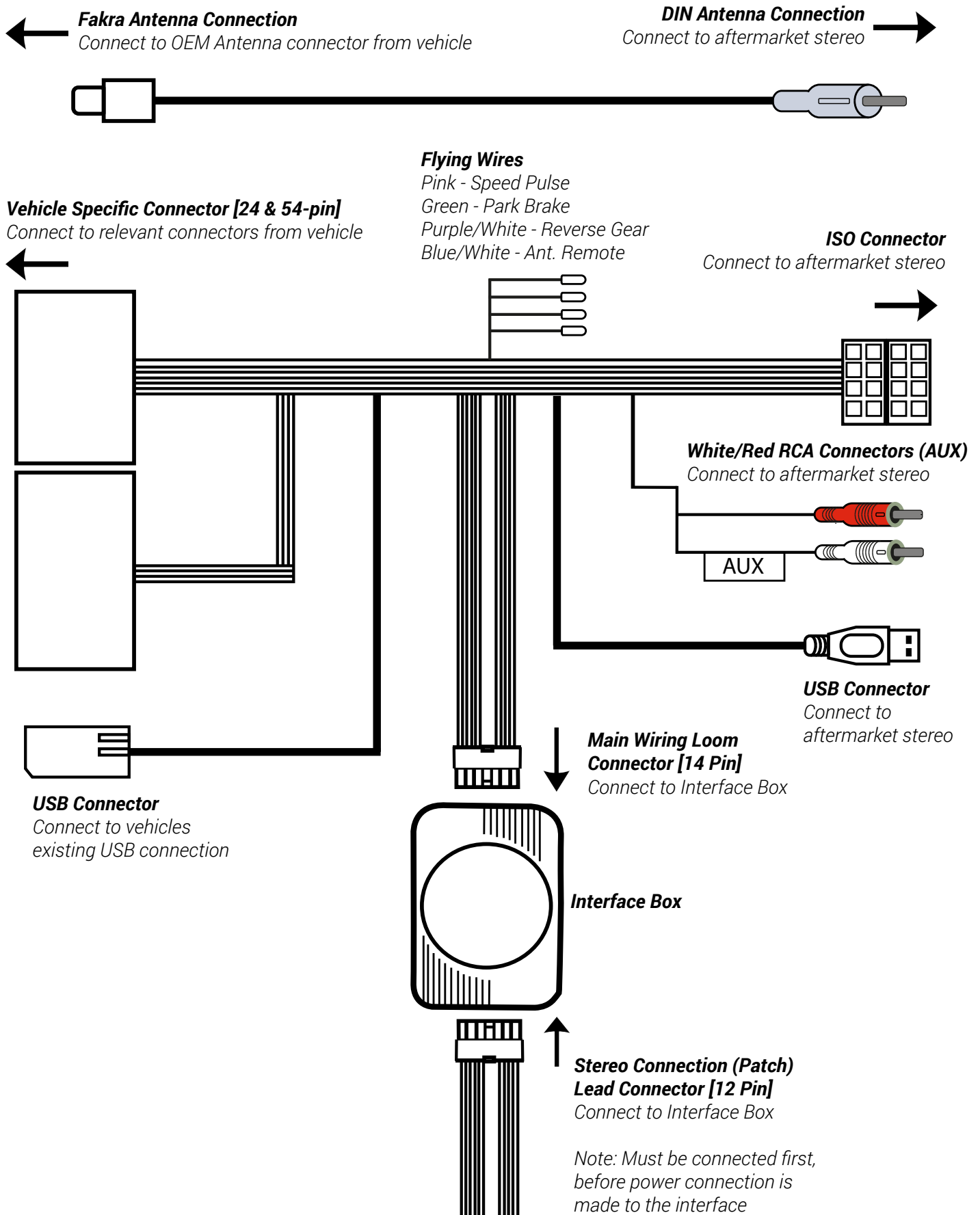
1. Volume Up
2. Volume Down
3. Voice Control
4. Source
5. Track Up (**Short Press**)
Hang Up (**Long Press**)
6. Track Down (**Short Press**)
Pick Up (**Long Press**)

FASCIA DIAGRAM



Need help? Visit support.connects2.com/tickets/technical

WIRING DIAGRAM



PRIOR TO INSTALLATION

Read the manual prior to installation. Technical knowledge is necessary for installation. The place of installation must be free of moisture and away from heat sources. Please ensure that the correct tools are used during the installation to avoid damage to the vehicle or product. **Connects2 can not be held responsible for the installation of this product.**

INSTALLATION GUIDE - FASCIA

DASH DISASSEMBLY

1.



Begin by using a panel removal tool to remove both of the fans and trim panel from each side of the head unit.

2.



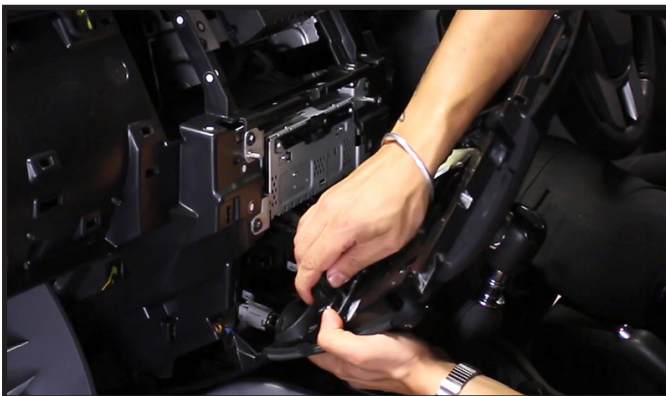
Next, remove the panels underneath the A/C controls by hand, followed by the panel situated between the head unit and A/C controls.

3.



With the panels removed, use a screwdriver to remove the five screws holding the fascia panel in place.

4.



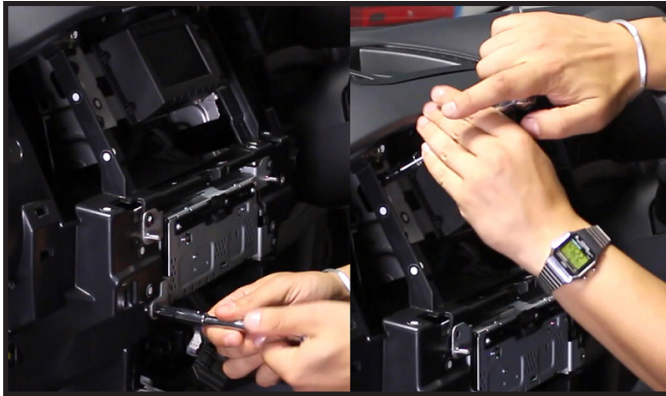
Once the fascia panel is free, disconnect all wiring to the panel and remove the panel.

Need help? Visit support.connects2.com/tickets/technical

INSTALLATION GUIDE

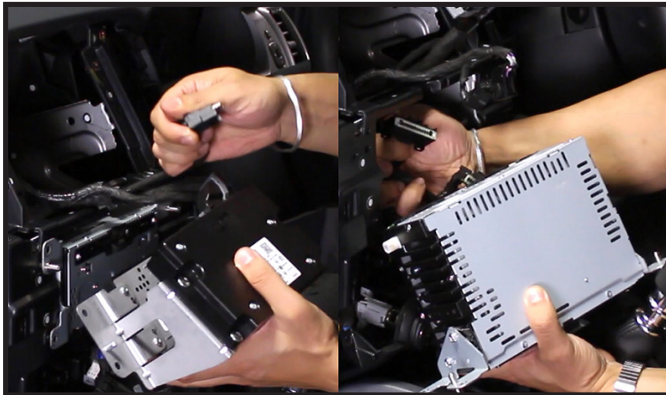
DASH DISASSEMBLY

5.



Unscrew the eight screws holding the head unit and top display in place.

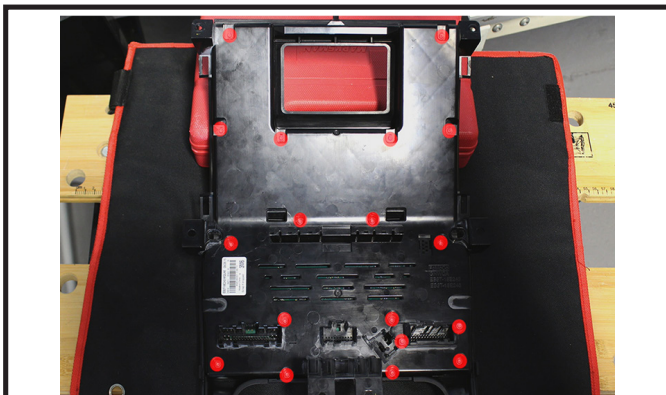
6.



Once the head unit and top display are free, disconnect all wiring to both parts and remove.

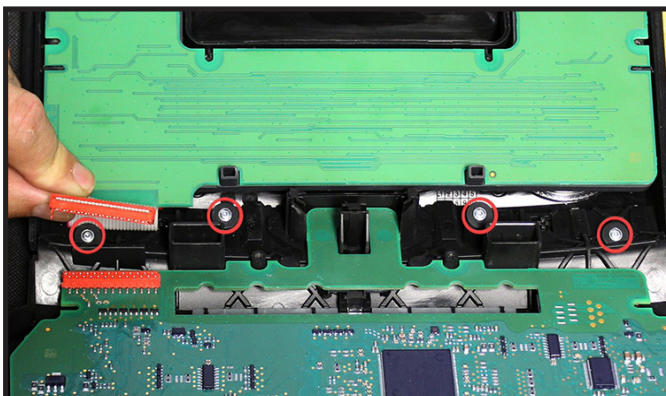
FASCIA DISASSEMBLY

7.



Take the OEM fascia panel and remove all eighteen screws located on the back (*see circled images opposite*).

8.

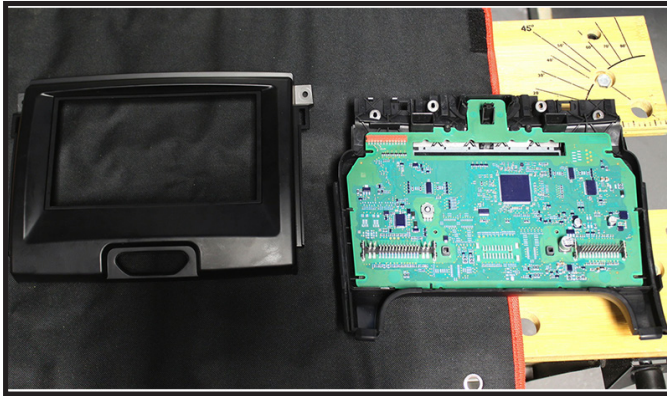


Remove the back of the panel and disconnect the wire which leads from the top board to the A/C panel to reveal a screw. Remove this and the three other screws on the panel to detach the A/C controls from the rest of the panel (*see circled images opposite*).

INSTALLATION GUIDE

FASCIA ASSEMBLY

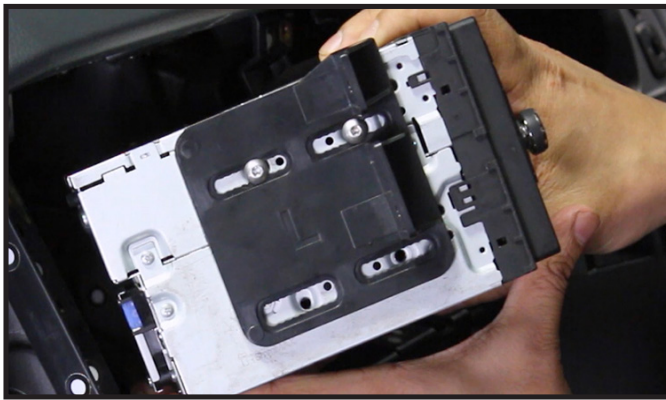
9.



Insert the new trim piece into the opening in the new fascia panel. Screw the fascia panel to the A/C controls (*using the four screws removed in Step 8*) and refit the back of the panel (*using the eighteen screws removed in Step 7*).

BRACKET ASSEMBLY

10.



Attach both of the brackets to the aftermarket head unit, using the fascia panel as a guide. Once satisfied with the fit, and once the wiring has been connected correctly, proceed to screw the head unit into the dash.

KIT ASSEMBLY

11.



Now reconnect all connections to the fascia panel and air conditioning assembly and clip into place around the head unit.

12.



Reattach all remaining trim panels to complete the installation.

Need help? Visit support.connects2.com/tickets/technical

INSTALLATION GUIDE - WIRING

See wiring diagram on Pg.4 for more information

Before installing the interface, the factory stereo must be removed and disconnected. To do this, please consult the vehicle owner's manual/handbook or contact a fitting professional.

For universal patch leads, prepare the wiring loops in accordance with the instruction manual supplied before installation.

1. Connect the 12 Pin connector from the stereo connection (patch) lead to the interface box.

2. Connect the opposite end of the stereo connection (patch) lead to the steering wheel control input on the back of the aftermarket stereo.

NOTE: This may be a 3.5mm jack connector or a wired input depending on the brand of aftermarket stereo being fitted. Please consult the aftermarket stereo installation manual for further information on where to make the connection.

! IMPORTANT: THIS STEP MUST BE COMPLETED BEFORE CONNECTING POWER TO THE INTERFACE. FAILURE TO DO SO MAY RESULT IN A LACK OF FUNCTIONALITY AND THE NEED TO REINSTALL THE PRODUCT.

3. Connect the 14 Pin connector from supplied wiring loom to the interface box.

4. Connect the power/speaker ISO connector to the power/speaker ISO connector at the rear of aftermarket stereo.

Note: For aftermarket stereos which do not have an ISO connector, please see 'Wiring Key' on Pg.2 for information on which wires to connect.

5. Connect any additional flying wires from the harness to the head unit as required.

Note: Additional 'flying' wires can be connected to the vehicle to support various features i.e. parking brake trigger, reverse gear and speed pulse. Details of these can be found under 'Additional Connections'.

6. Attach the red & white RCA connectors to the rear aux inputs on the aftermarket head unit.

7. Attach the USB connectors between the vehicles original connector and the corresponding port on the rear of the aftermarket head unit.

8. Attach the antenna adapter in between the vehicles pre-existing connector as well as the rear of the aftermarket head unit.

9. Connect the vehicle specific connectors to the vehicles main power connector.

10. Test stereo and steering wheel control functionality for correct operation before reassembling the vehicle dashboard. If steering wheel control functions are unresponsive, please uninstall the interface and wiring and reinstall carefully in accordance with the above steps.

*For further help, please contact and fill out a support ticket with the full details of your issue at:
support.connects2.com/tickets/technical*